

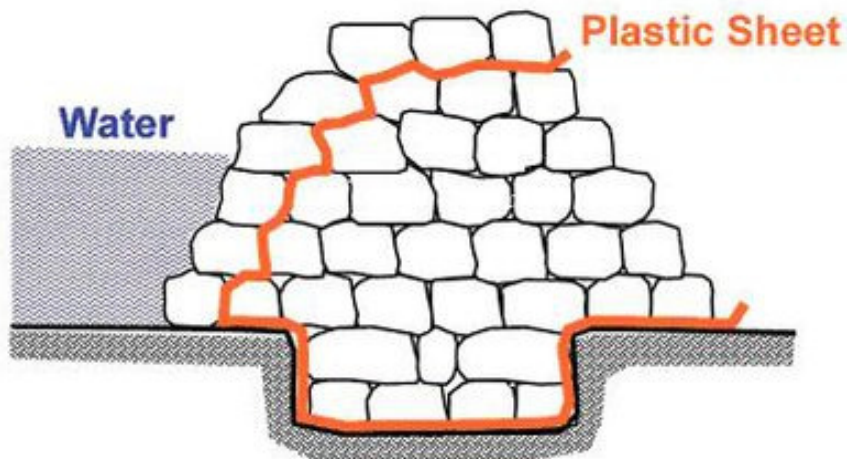


# Sandbagging

## Sandbagging

### Safety

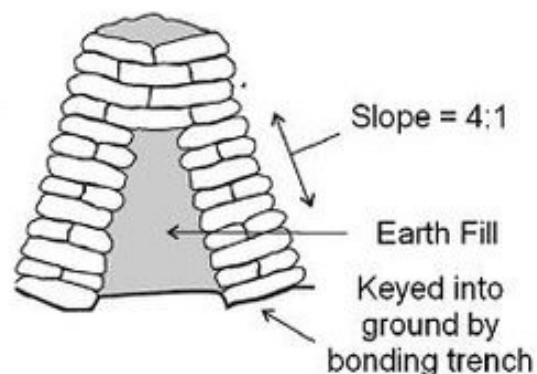
- ! Use proper manual handling techniques when lifting and carrying sandbags. A filled sandbag is heavy weighing approx. 15 to 20 kg.
- Sand becomes heavier when wet.
- Wear gloves and eye protection. Avoid contact with eyes and mouth.
- Use rubber gloves if in contact with storm water.



Typical Sandbag Walls

### Sandbag Wall

- The face must be sloped, with the base set on firm ground.
- The ratio of height to width must be 4:1
- The maximum height is 1.5m
- Key into the ground one sandbag deep and two wide
- Thread plastic sheeting through the layers, not on the outside wall.





# Laying Sandbag Walls

## Laying Sandbag Walls

- A tamped sandbag is about 150mm high x 250mm wide x 500mm long.
- A standard sandbag, properly filled, weighs around 18 kilograms.
- Sandbags should be 2/3 to 3/4 full (approx 5 to 6 shovels full).
- Lie the bags in horizontal courses of headers and stretchers.
- Start and finish the wall with headers. Stagger joints in adjacent courses.
- ! Do not place bag necks or side seams on the outer face of the wall.
- Tie the necks for transport only. Untie and flatten the necks under the next sandbag.
- When each bag is in place, beat it into shape with a pick handle or similar.

